

PORTABLE LADDER WITH PLATFORM

COMPLIANT WITH NFE 93-352 | NFE 93-353 | EN 131.7 | DÉCRET 924-2004

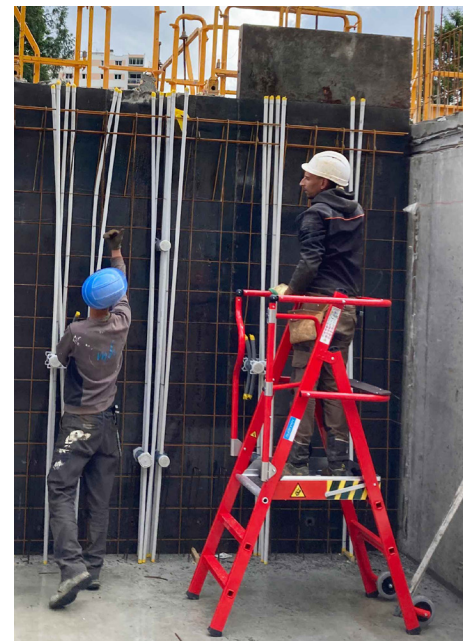
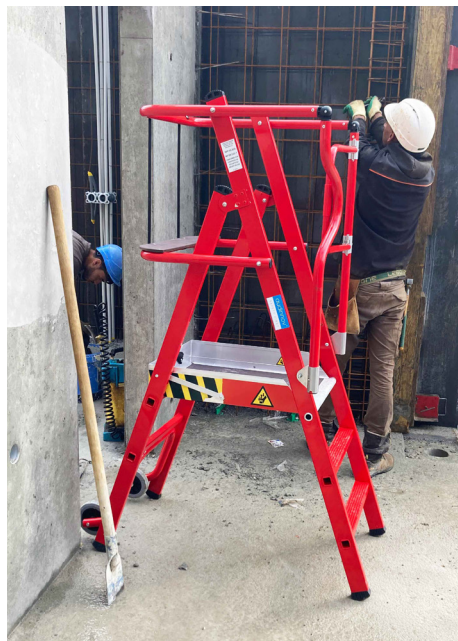


BATISTEP PRODUCT DETAILS

- A wide range of platform specifically developed for building industry
- Light product for an easier transport on site
- An intuitive set up of the guardrail
- An XXL workstation for more ergonomics
- Less than 80 cm of wheelbase to go through all the doors
- Strip steps
- A trough material for construction sites
- Fitted with shelf
- A saloon gate for more security and easier access to the platform

SPECIFIC DEVELOPPEMENTS

- A wide range with fixed and adjustable height
- Semi-automatic locking system of the telescopic plans
- Optional equipment : tool holder



Retrouvez tous nos produits sur www.audinnov.fr

AUDINNOV - 3 ZA du Pasquier - 71800 Varennes-sous-Dun
Tél. : 03 85 28 01 41 - contact@audinnov.fr

audinnov®
SAFETY FIRST

Because we care!

PORTABLE LADDER WITH PLATFORM

COMPLIANT WITH NFE 93-352 | NFE 93-353 | EN 131.7 | DÉCRET 924-2004



Model	Product code	Number of steps	Weight	Platform height	Maximum working height	Dimensions L x l x H	Adjustment range	Standards
PIRL FIXED HEIGHT								
SC 02	407102	2	17 kg	0.46 m	2.46 m	1.96 x 0.66 x 0.34 m	NA	EN 131.7 NFE 93.353
SC 03	407103	3	18.5 kg	0.70 m	2.70 m	2.20 x 0.66 x 0.34 m	NA	
SC 04	407104	4	21 kg	0.93 m	2.93 m	2.45 x 0.66 x 0.34 m	NA	
PIRL TELESCOPIC								
TC 3-4	407234	3 ou 4	23.8 kg	0.75/0.95 m	2.75/2.95 m	2.23 x 0.67 x 0.48 m	0 to 250 mm	EN 131.7 NFE 93.353