

DOUBLE & TRIPLE ROPE OPERATED EXTENSION LADDER FOR LOW VOLTAGE LIVE WORKING

COMPLIANT WITH EN 50-528 - 2010 | TST-BT <1000V /1500V



THE + HELIOS

- Available in 2 or 3 sections
- High-visibility composite stiles
- D-shaped aluminium rungs spaced at 250 mm, Ultragrip® technology deeply serrated
- Heavy-duty and lightweight design with closed rectangular round edge profiles
- Rungs and stiles are replaceable thanks to a unique and patented screw assembly technique (Audinnov patent)
- Self-locking extruded aluminium rung lock system
- Rope positioned on the operator side, breaking strength of 1,500 daN
- Non-slip deeply ribbed rubber ladder feet
- Friction free slide guides
- Ø 100mm wall wheels

OPTIONAL FEATURES

- Clam cleats and rope kit for securing the ladder before climbing
- Rubber-cushioned V-shaped pole leaning device
- Automatic foot operated ladder stabiliser/leveller for uneven surfaces up to 180 mm




MADE IN FRANCE

Find all our products on www.audinnov.fr

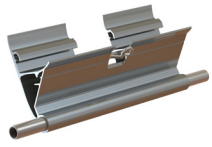
AUDINNOV - 3 ZA du Pasquier - 71800 Varennes-sous-Dun
Tél. : +33 (0)3 85 28 01 41 - contact@audinnov.fr

audinnov®
SAFETY FIRST

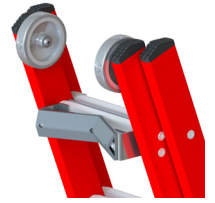
Because we care!

DOUBLE & TRIPLE ROPE OPERATED EXTENSION LADDER FOR LOW VOLTAGE LIVE WORKING

COMPLIANT WITH EN 50-528 - 2010 | <1000V/1500V



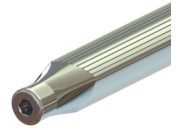
Extruded aluminium self-locking rung lock system



Pole leaning device and wall wheels



Optional clam cleats and rope \varnothing 10.5



D-shaped grip rungs



Ribbed rubber ladder feet



Optional stabiliser/leveller



Non-contractual information and photographs - Model sheet V EN 07.3- AUDINNOV

DOUBLE & TRIPLE ROPE OPERATED EXTENSION LADDER FOR LOW VOLTAGE LIVE WORKING

COMPLIANT WITH EN 50-528 - 2010 | <1000V/1500V

AVAILABLE OPTIONS

POLE LEANING DEVICE



LADDERTRANSPORT DOLLY



ROPE Ø 10.5



(ref.802152)

CLAM CLEATS



(ref.802130)

STABILISER/LEVELLER



LOAD SPREADING FEET



(ref.802022)

TRANSPORT BAG TYPE 1



(ref.802157)

TRANSPORT BAG TYPE 2



(ref.802156)

DOUBLE & TRIPLE ROPE OPERATED EXTENSION LADDER FOR LOW VOLTAGE LIVE WORKING

COMPLIANT WITH **EN 50-528 - 2010** | **<1000V/1500V**

Product code	Length folded	Open length	Weight	Number of rungs	Intermediate length	Qty of rope
DOUBLE SECTION EXTENSION LADDER						
101101	2.50 m	4 m	16 kg	2 x 9		1
101102	3 m	5 m	18 kg	2 x 11		1
101103	3.50 m	6 m	19 kg	2 x 13		1
101105	4 m	7 m	25 kg	2 x 15		1
101106	4.50 m	8 m	29 kg	2 x 17		1
101107	5 m	9 m	35 kg	2 x 19		1
101108	5.50 m	10 m	39 kg	2 x 21		1
101109	6 m	10.50 m	43 kg	2 x 23		1
101059	7 m	12 m	48 kg	2 x 27		1
TRIPLE SECTION EXTENSION LADDER						
101111	2.50 m	5.50 m	25 kg	3 x 9	4 m	1
101112	3 m	7 m	27 kg	3 x 11	5 m	1
101113	3.50 m	8.50 m	31 kg	3 x 13	6 m	1
101114	4.25 m	10.25 m	45 kg	3 x 16	7.25 m	2
101215	6 m	14 m	90 kg	3 x 23	10 m	2